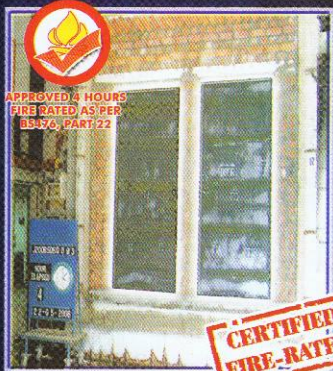


MAXSTEEL®

Fire Rated Steel Flush Doors • Steel Window Louvers

MAXimum DURABILITY!

FIRE RATED STEEL FLUSH DOORS



APPROVED 4 HOURS
FIRE RATED AS PER
BS476, PART 22

**CERTIFIED
FIRE-RATED**

Hi-Rated®

FIRE RATED STEEL FLUSH DOORS

- ✓ TESTED!
- ✓ APPROVED!
- ✓ CERTIFIED!

**4 HOURS
FIRE RATED**
AS PER BS476, Part 22

MATERIAL SPECIFICATION:

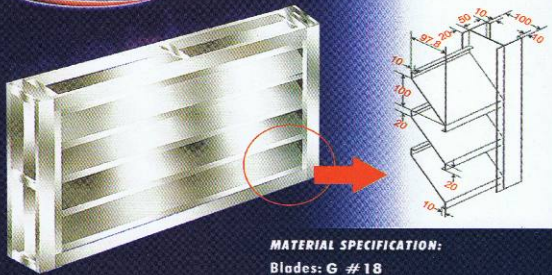
- Material: Galvanized Iron
- Door Panel: Gauge #18
- Door Jamb: Gauge #16
- Hinges: Stainless Steel Hinges



UNION BANK OF THE PHILIPPINES
Office Center Pasig City

AVEC SHARES CENTER
For Bonifacio

WINDOW LOUVERS



MATERIAL SPECIFICATION:

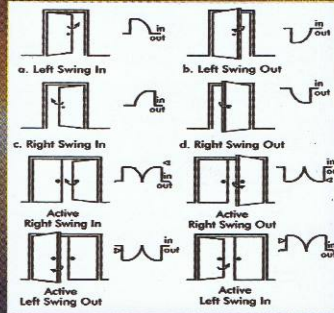
- Blades: G # 18
- Frame: G # 16
- Material: Galvanized Iron
- Painting Finish: Epoxy Primer

Distributed by:

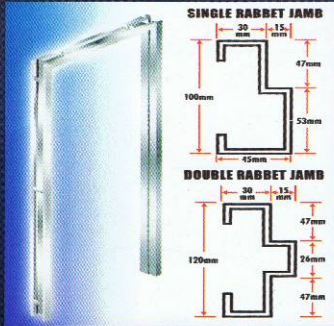
DSEI Diatech Success Group, Inc.

Plant: #190 General Luis St., Novaliches, Quezon City
 Showroom: #266 N. Domingo St., Brgy. Pasadena, San Juan City, Philippines
 Tel. Nos.: 936-1669 • 650-4616 • 727-2993 • Fax Nos.: 414-0719 • 414-0693
 E-mail: diatech@pltdsl.net • sales@maxsteel.com • website: www.maxsteel.com.ph

TYPES OF SWINGS



JAMB TYPE CONSTRUCTION



MAXSTEEL®

The Roll-up Door Specialist™

- ROLL-UP DOORS & GRILLES
- POLYCARBONATE DOORS
- FIRE-RATED STEEL DOORS
- METAL LOUVERS
- METAL CEILING ASSEMBLY
- METAL DRY WALL PARTITION



**POSITIVE PRESSURE
FIRE DOORS**

**MAXimum
SECURITY!**

**MAXimum
SAFETY!**



- ✓ TESTED!
- ✓ APPROVED!
- ✓ CERTIFIED!

as per UL 10c, ASTM E2074
NFPA 80,252



APPROVED 4 HOURS
FIRE RATED AS PER
BS476, PART 22



www.maxsteel.com.ph

**CERTIFIED
FIRE-RATED**

MAXSTEEL®

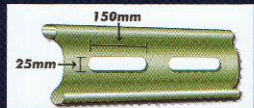
MAXimum RELIABILITY!

CURTAIN

<p>#60 Profile</p>  <p>60mm</p> <p>Profile: C Type</p> <p>Gauge: #24 & #22</p> <p>Usage: Manual Operation</p> <p>Materials: Galvalume Pre-painted</p>	<p>#75 Profile</p>  <p>75mm</p> <p>Profile: C Type</p> <p>Gauge: #24 & #22 • #20 & #18</p> <p>Usage: Manual & Motor Operation Chain Block Operation</p> <p>Materials: Galvalume • Pre-painted Galvanized</p>	<p>#105 Profile</p>  <p>105mm</p> <p>Profile: C Type</p> <p>Gauge: #18</p> <p>Usage: Motor Operation Chain Block Operation</p> <p>Materials: Galvalume Pre-painted</p>	<p>#75 Profile</p>  <p>75mm</p> <p>Profile: S Type</p> <p>Gauge: #24 & #22 • #20 & #18</p> <p>Usage: Manual & Motor Operation Chain Block Operation</p> <p>Materials: Galvalume</p>	<p>Polycarbonate Slats</p>  <p>100mm</p> <p>ROLLite Polycarbonate Slats</p> <p>Gauge: 2mm thk</p> <p>Usage: Manual & Motor Operated</p> <p>Materials: Clear • Polycarbonate w/ Dried/Anodized Aluminum Insert</p>
---	---	---	--	---

AIR PASSAGE

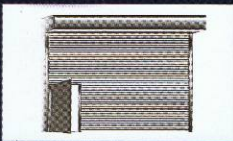
Ventilation Holes



Perforated Slats



WICKET DOOR

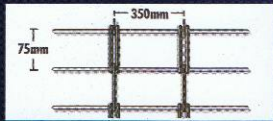


DEMOUNTABLE MIDPOST

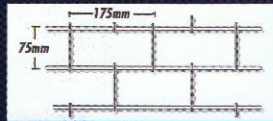


ALUMINUM GRILLS

Venetian Type



Brick Type



MOTOR & SPECIFICATION

SINGLE SWITCH WIRE CONNECTION

Block: Green, Red, White

Switch Box: Up, Stop, Down

MODEL	WT.	CAPACITY	HP	AMP.	RPM
YH300	300kg	1/4	3A	29.5	
YH400	400kg	1/3	3A	29.5	
YH500	500kg	1/2	3.5A	26.5	
YH700	700kg	3/4	4.5A	19.5	
YH800	800kg	3/4	4.5A	19.5	
YH1000	1000kg	1	5A	15.5	

With Optional Remote Control
All Motor is Single Phase with continuous hand chain.
220V

- V 1.0 TON - Chain Block
- V 1.5 TON - Chain Block
- V 2.0 TON - Chain Block

MAXSTEEL®

Steel Flush Doors & Jamb

FLUSH DOORS

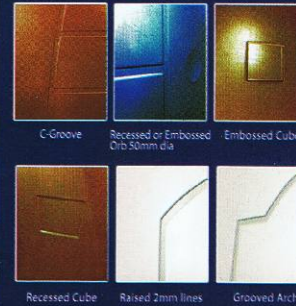


Stainless Steel Door

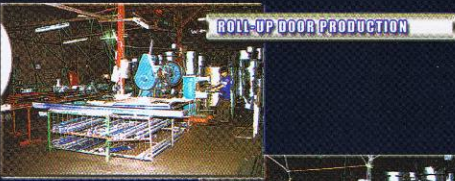
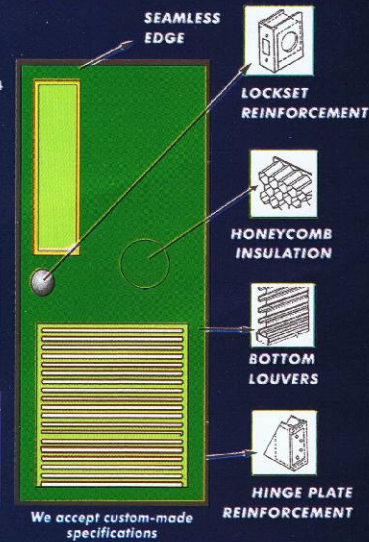
SPECIFICATION:

Material: G.I., Galvalume
Stainless Steel SUS 304
Panel: G#18 Jamb: G# 16
Insulation: Honeycomb
Finish: Epoxy Primer Gray

DESIGN OPTIONS



FLUSH TYPE CONSTRUCTION



MAXSTEEL® STAINLESS FLAG HINGE

5" x 4" [loose pin type]

• Stainless Steel SUS 304 • 12mm Shaft pin • 5 screws per leaf

MAXSTEEL® STAINLESS BUTTERFLY BALL BEARING HINGE

• Full Mortise • 4 Ball Bearing 4.5" x 4.0" x 3.5 mm
• Non-Rising Loose Pin • Stainless Steel SUS 304

S.F.C. STAINLESS MORTISE TYPE FLUSH BOLT

STAINLESS PULL HANDLE

Pivot Hinge

Double Action Floor Hinge